

# R3-4-15K-DT & R3-10-25K-G5 Series Inverter Export Limit User Manual

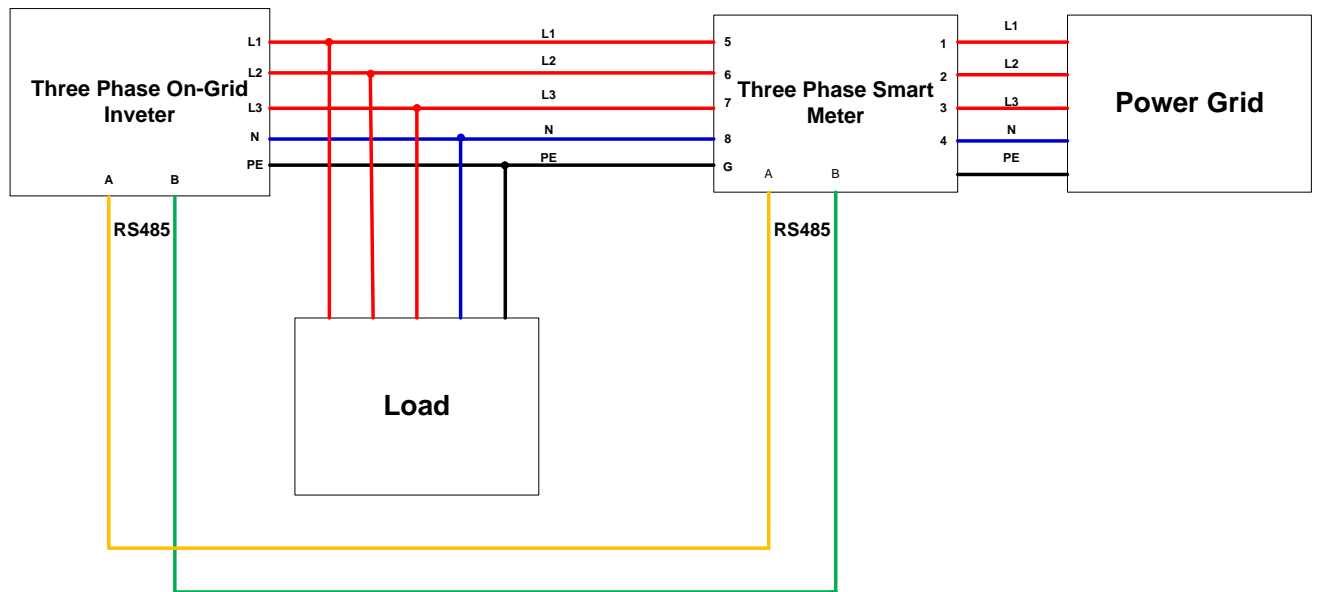
Renac Power Technical Support Team

Rev	Effective Date	Description
V1.0	2022-07-26	Initial Release
V1.1	2022-12-27	Updated

## Content

1. System Diagram .....	2
2. Connection steps .....	2
3. Setting procedure.....	4
3.1 Settings on inverter. ....	4
3.2 Settings on App. ....	5
3.3 Settings on smart meter.....	10
4 Running interface.....	11

## 1. System Diagram

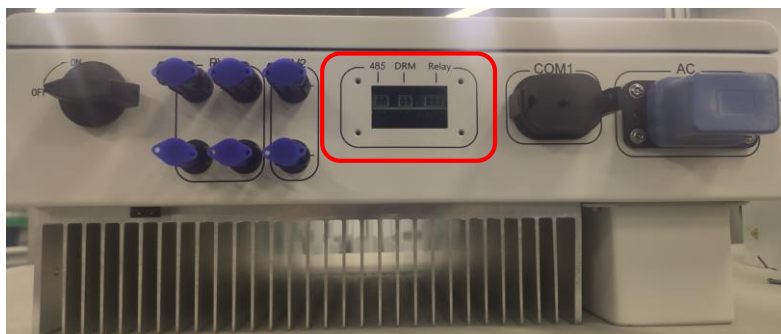


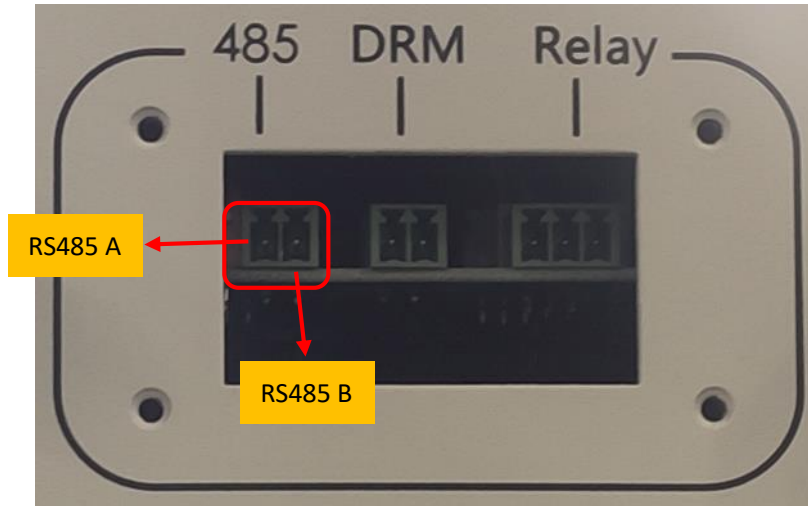
## 2. Connection steps

2.1 Connect the SDM630-Modbus V2 smart meter to the three-phase system according to the above electrical connection diagram.

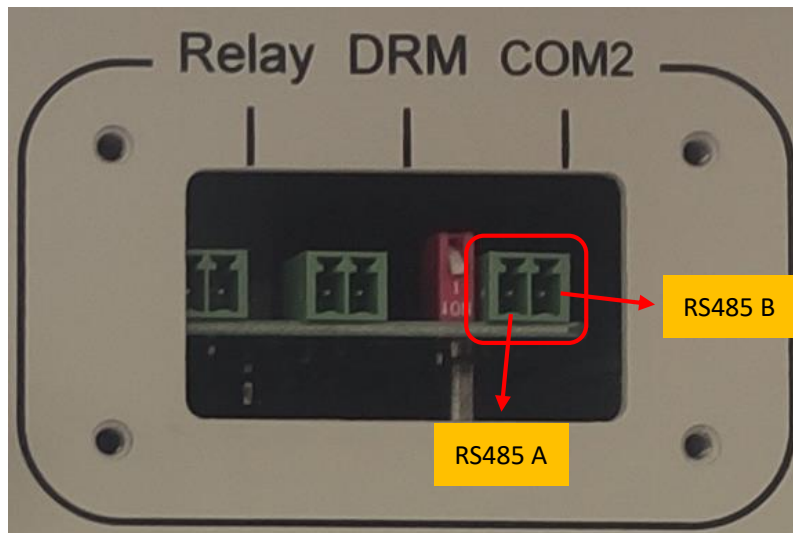
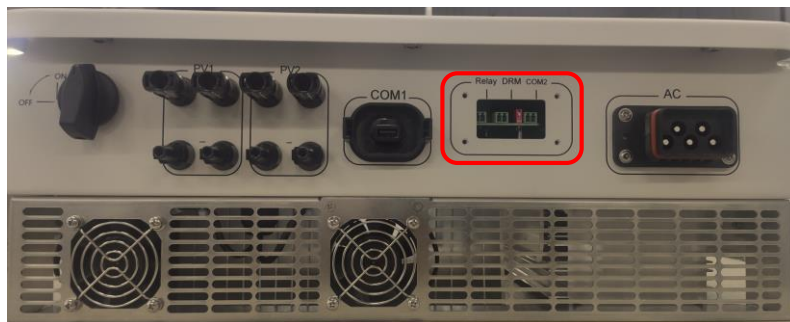
2.2 Connect the smart meter to the inverter.

2.2.1 If it is an R3-4-15K-DT series inverter, please connect the smart meter to the "485" port.





2.2.2 If it is an R3-10-25K-G5 series inverter, please connect the smart meter to the "COM2" port.



### 3. Setting procedure

#### 3.1 Settings on inverter.

3.1.5 Press the function key until "Setting" appears on the interface, and long press the function key to enter the "Setting" interface.



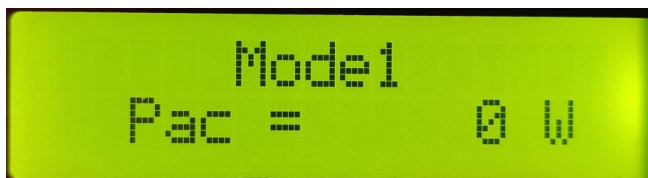
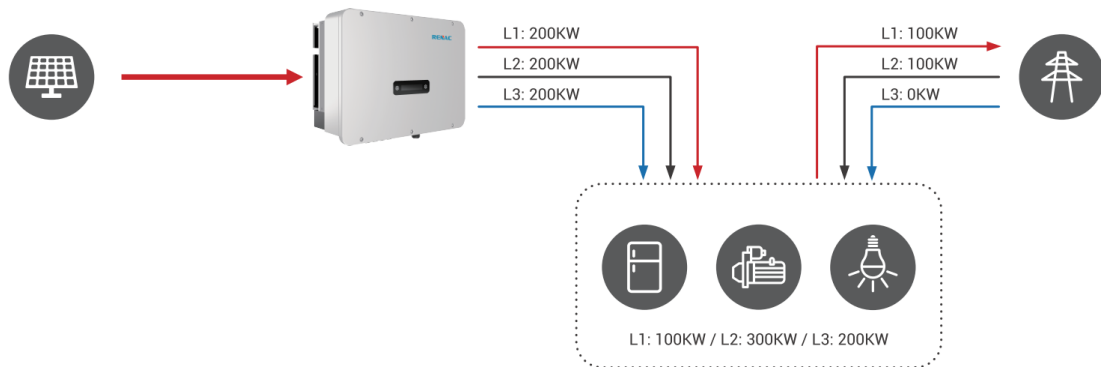
3.1.2 Enter into "Set ZeroIn Mode", select export limit mode.



3.1.3 If client side the situation is "THREE PHASE SYSTEM–Zero Injection" as below figure shown, please select the export limit mode as "Mode 1".

**Remark:**

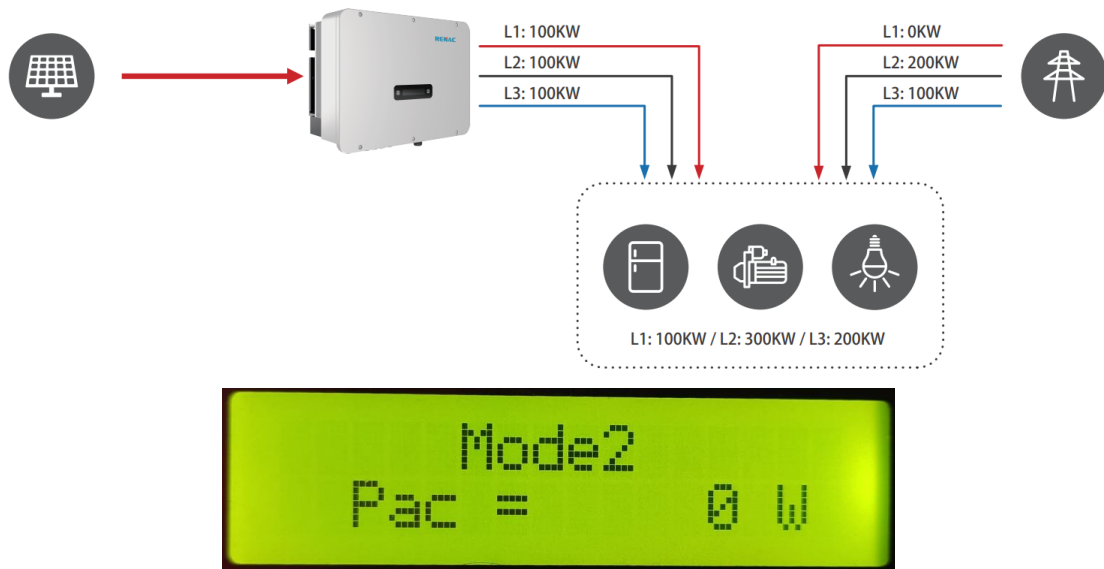
Situation "Zero Injection" means that the inverter output is equal to the load consumption, and the final injection power is zero, as shown in the figure below. If the grid company requires the total injection power to be 0, please select the Mode 1.



3.1.4 If client side the situation is “THREE PHASE SYSTEM–Zero Injection on each phase” as below figure shown, please select the export limit mode as “Mode 2”.

**Remark:**

Situation “Zero Injection on each phase” means that the output of the inverter is not equal to the load consumption, and the inverter power will be output according to the minimum load power. For example, as shown in the figure below, the minimum load in the three-phase system is L1:100KW, and the inverter will detect the minimum 100KW load power and output 100KW power per phase. If the grid company requires the injection power of each phase to be 0, please select mode 2.



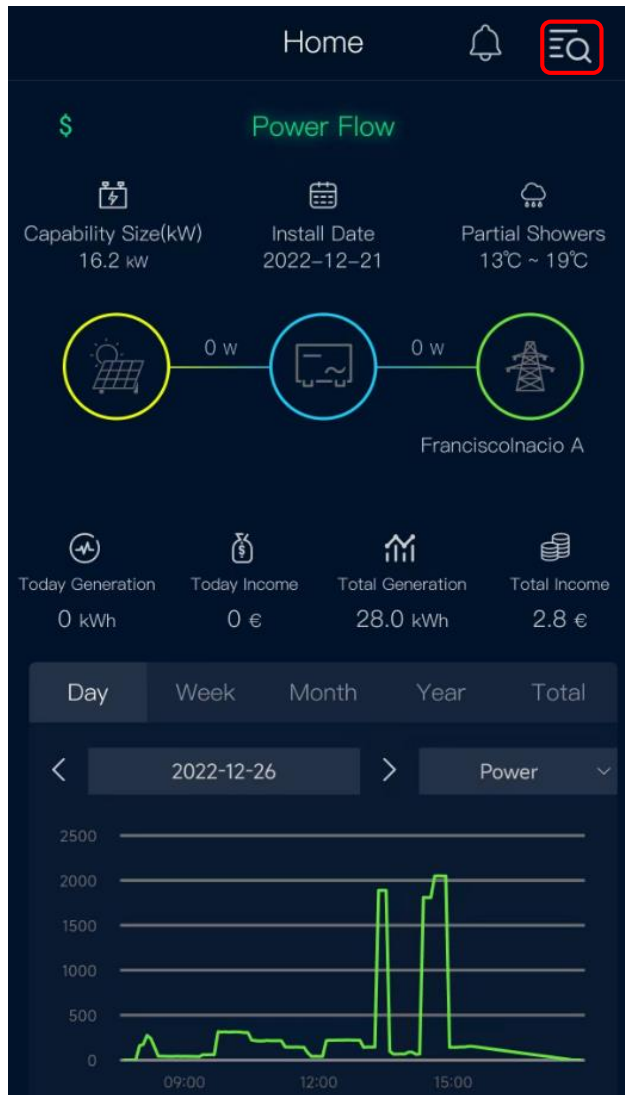
3.1.5 Long press the function key to confirm the setting. When the interface displays “Success”, the export limit mode setting is successful.



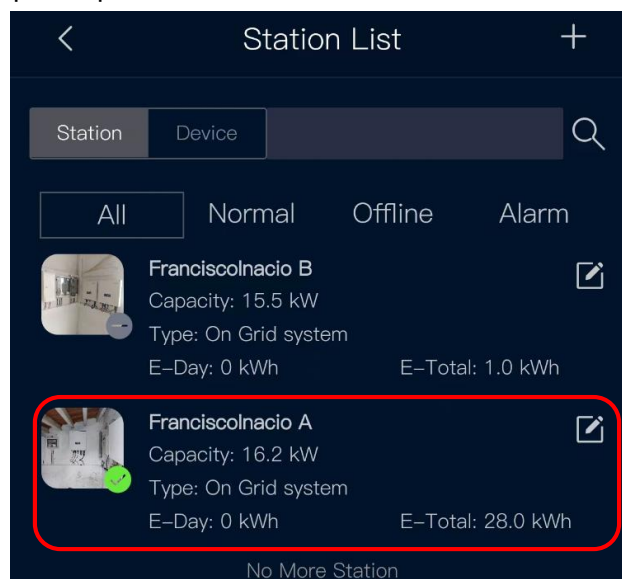
**3.2 Settings on App.**

3.2.1 Connect inverter to Renac SEC monitoring system.

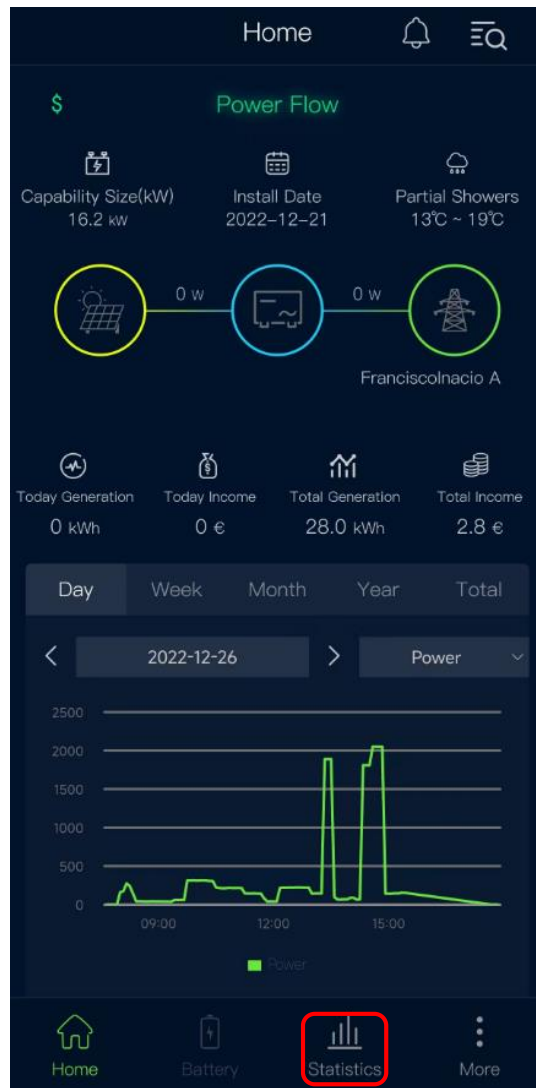
3.2.2 Click “”.



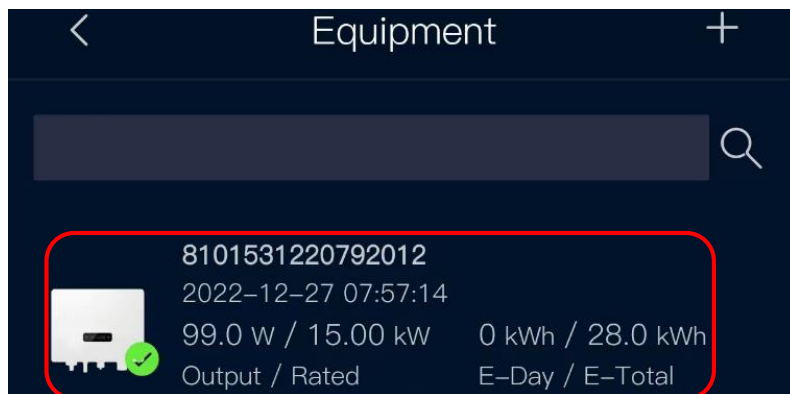
3.2.3 Enter into the power plant.



3.2.4 Click "Statistic".



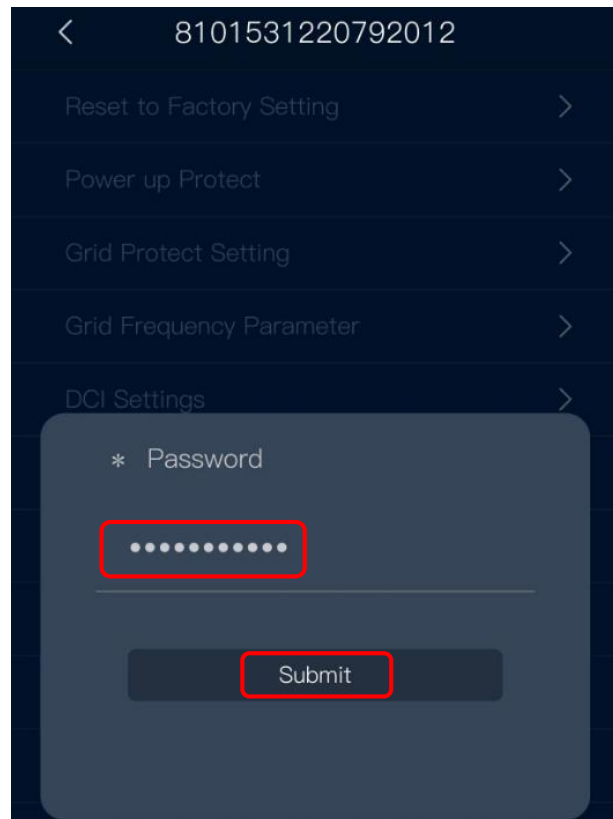
3.2.5 Click the inverter to enter the equipment details interface.



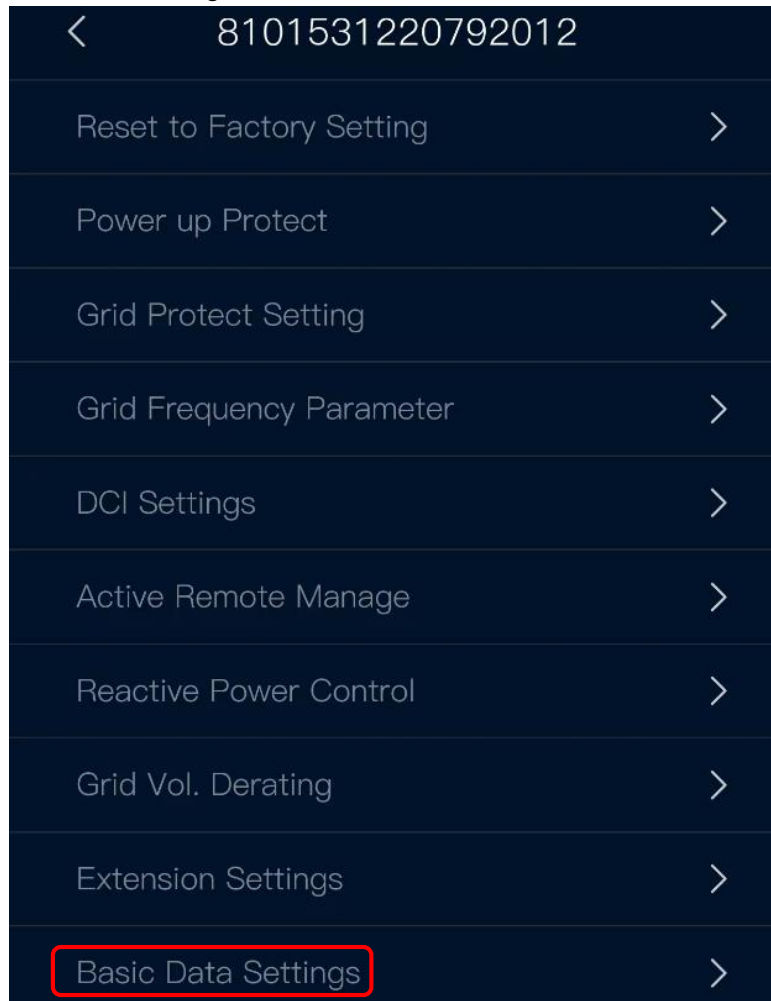
3.2.6 Click “”.



3.2.7 Enter the password (Same as login password), click “Submit”.



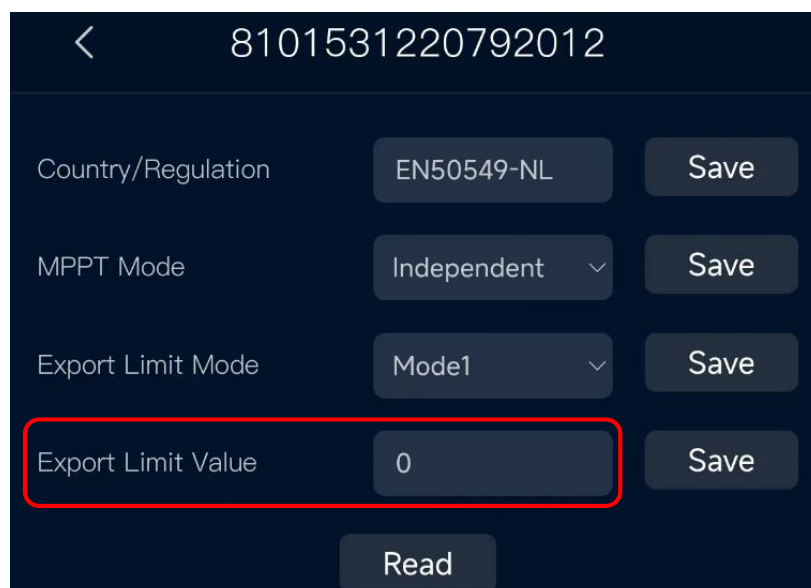
3.2.8 Click “Basic Data Settings”.



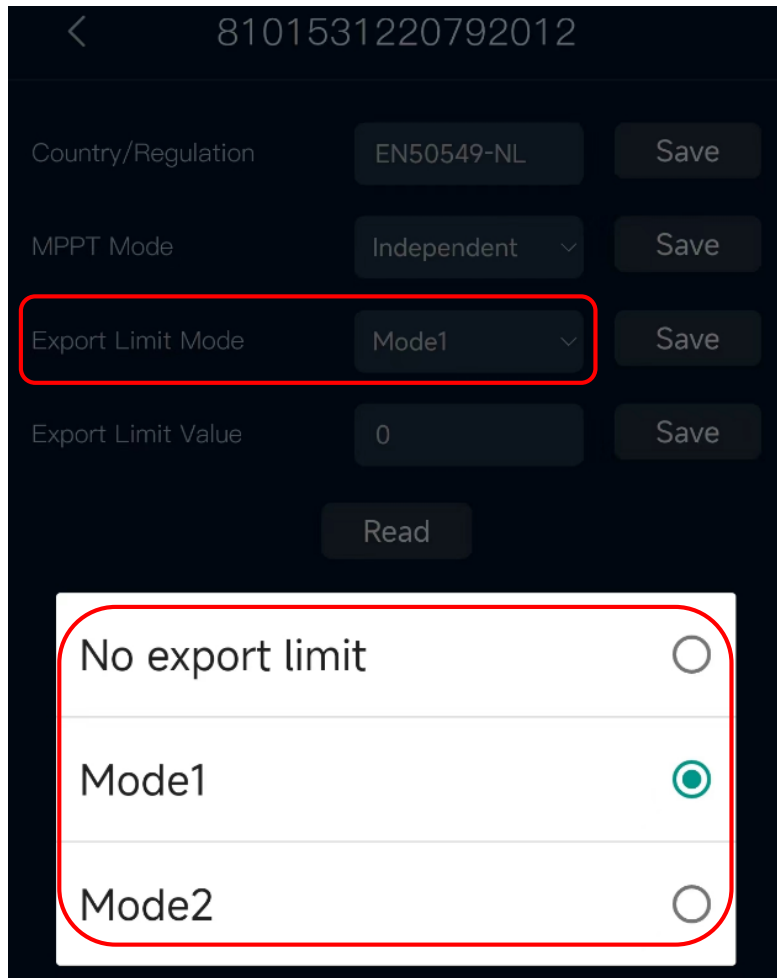
3.2.9 Set the “Export limit value” as “0”. Click “Save”.

**Remark:**

The user can set the "Export limit value" from 0-100, the value 100 means that 100% of the generated power is allowed to feed into the grid.

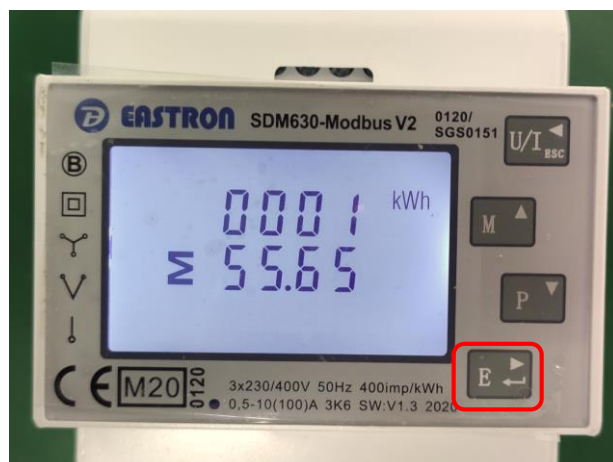


3.2.10 The user can also remotely set the export limit mode (the same setting as in section 3.1) and turn off the export limit function (select “No export limit”) through the APP.

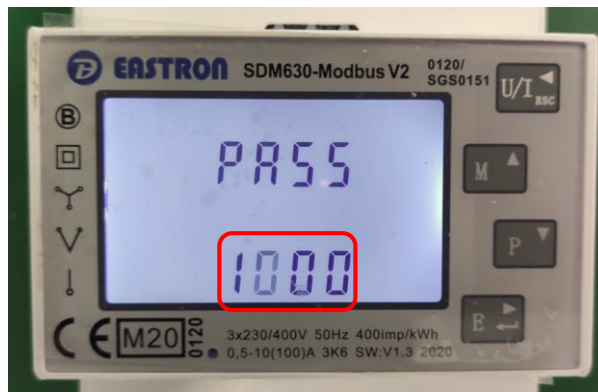


### 3.3 Settings on smart meter

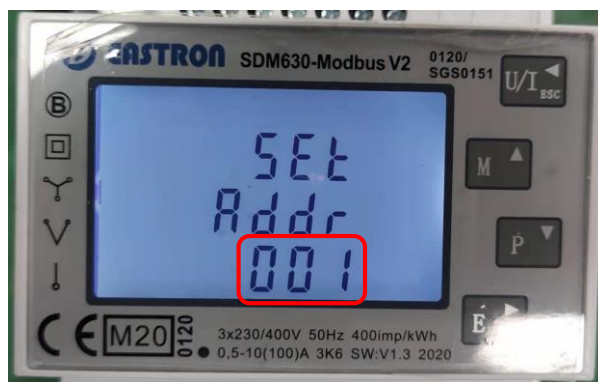
3.3.1 When the following interface, long press the Enter key.



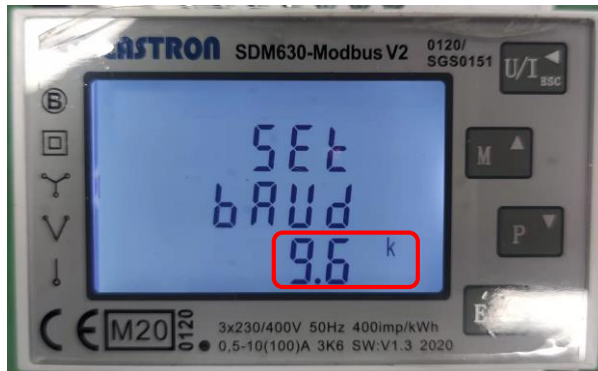
3.3.2 Enter the password "1000" and long press Enter key to confirm.



3.3.3 Set the meter address to 001, and long press the Enter key to confirm the setting.



3.3.4 Press page up and down, confirm the baud rate setting see if it is 9.6K, if not, long press the "enter" key to correct the settings.



## 4 Running interface

Connect the inverter to the Renac SEC monitoring platform, the user will see the energy flow on the monitoring App.

4.1 Energy Flow for export limit mode 1.



4.2 Energy Flow for export limit mode 2.

