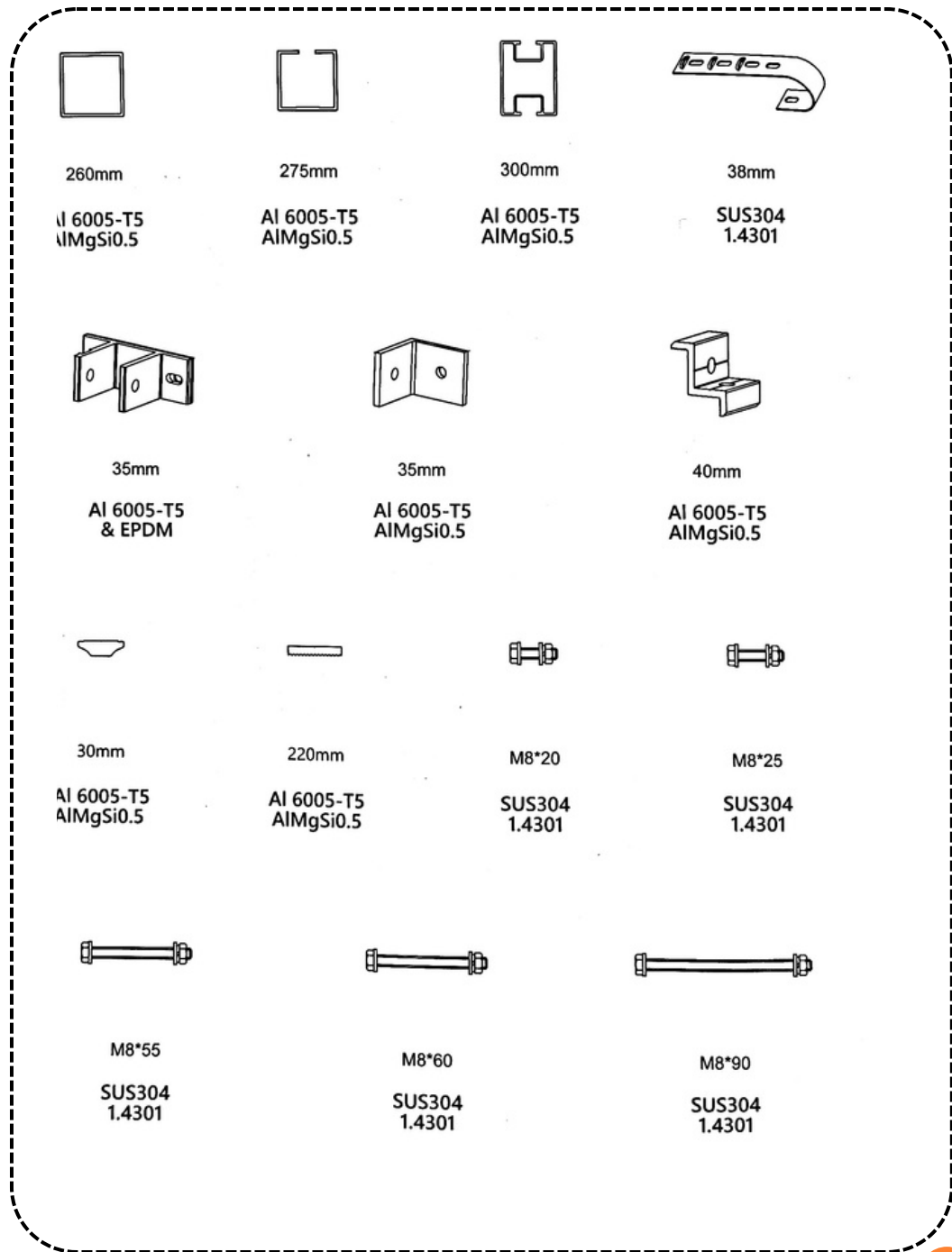
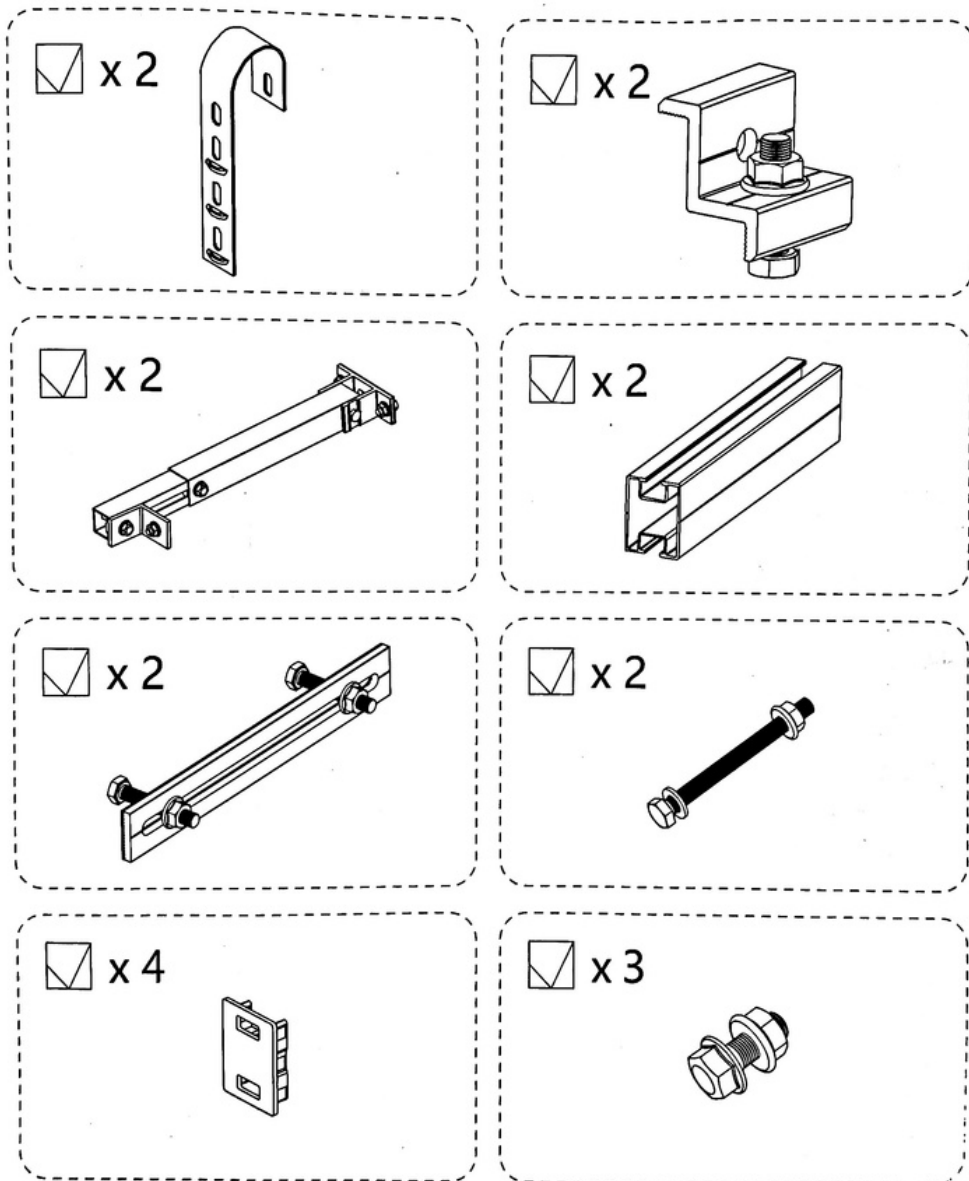
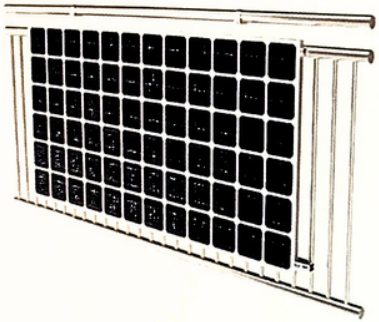


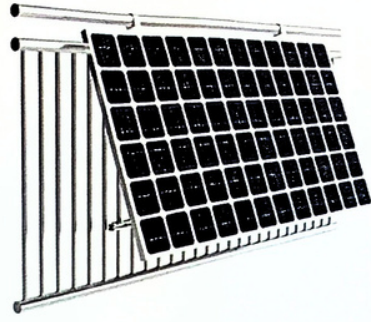
# 1. Accessoires contenus dans le kit



## 2. Inclinaisons



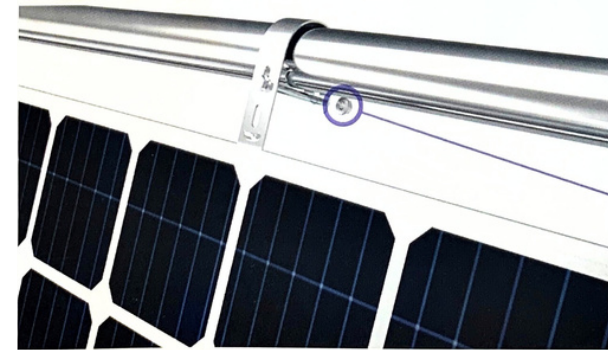
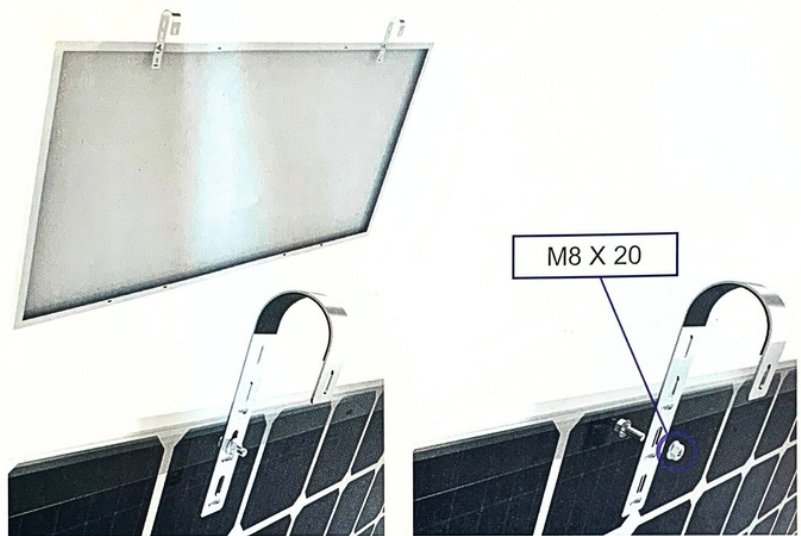
Fixation 0°



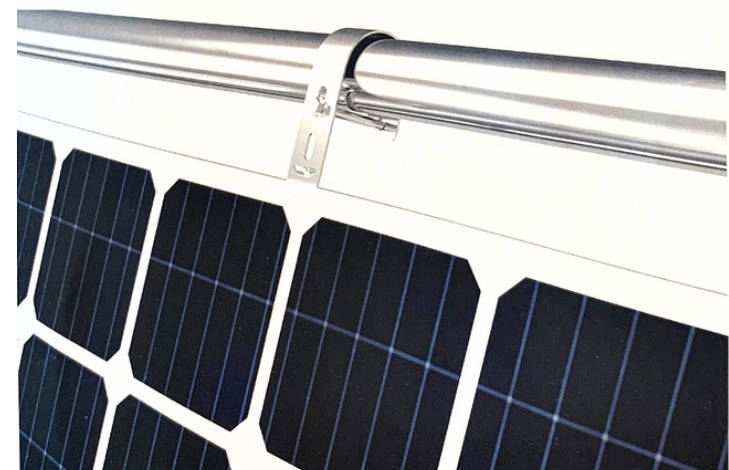
Fixation ajustable 15°-30°

## 3. Installation

Pour fixation ajustable 15°-30°

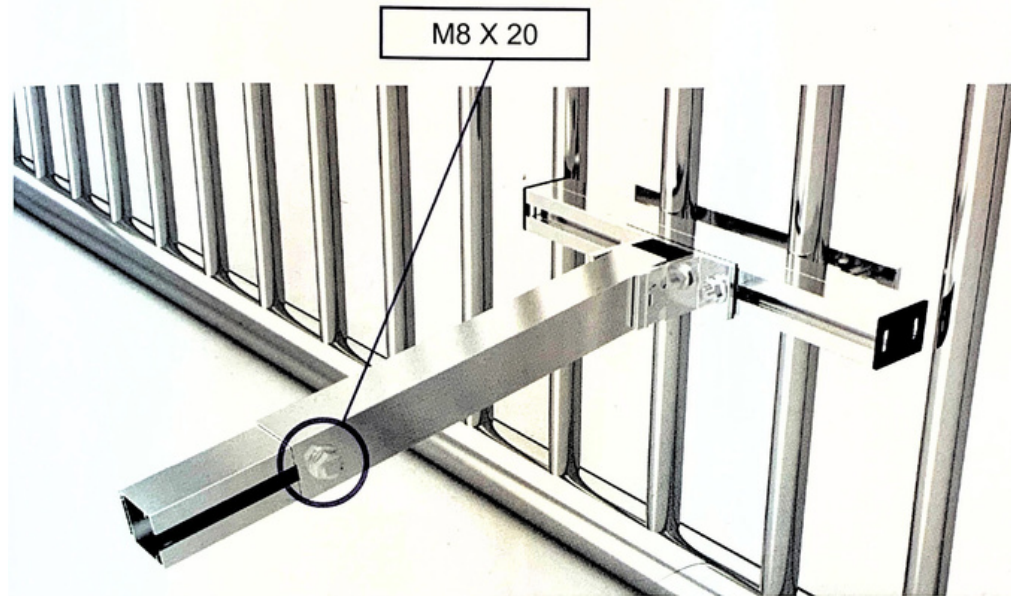


M8 X 90

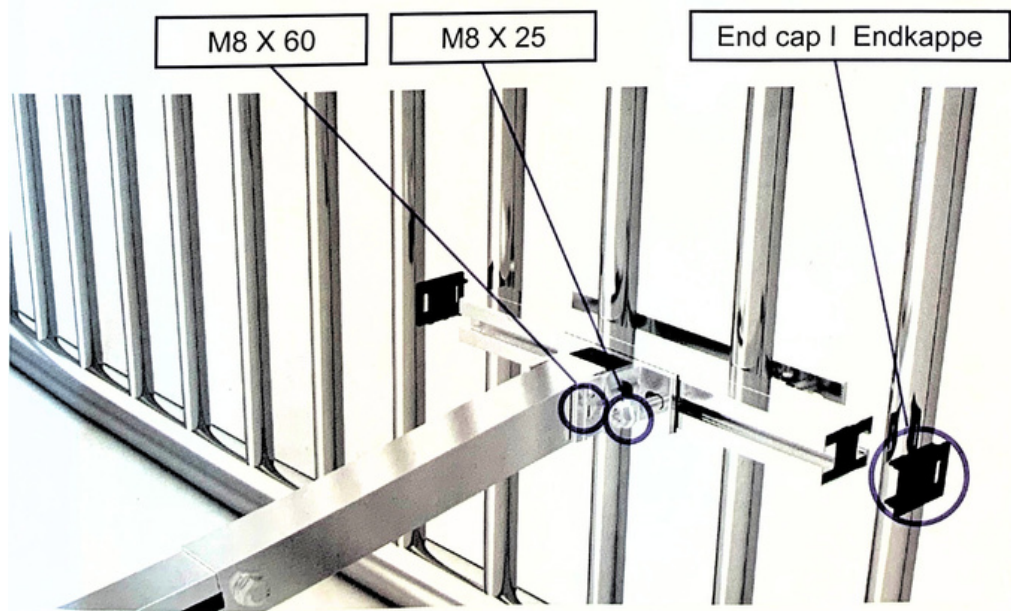




M8 X 55



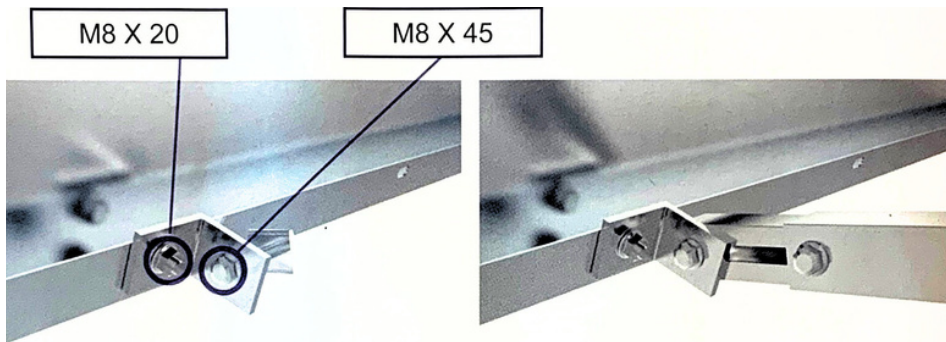
M8 X 20



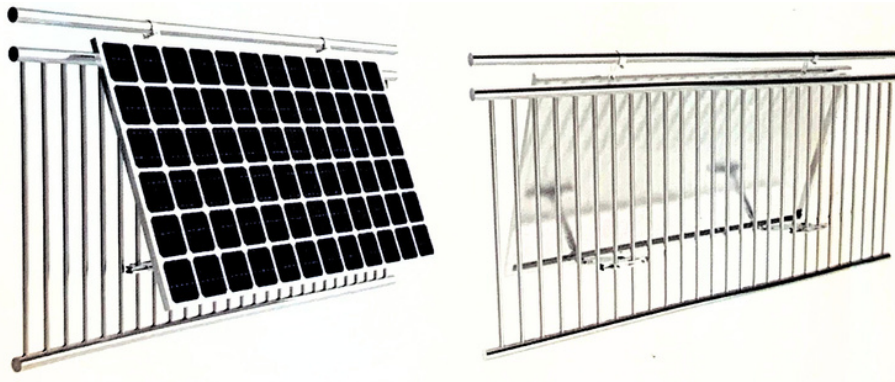
M8 X 60

M8 X 25

End cap | Endkappe



Pour fixation ajustable 15°-30°



Ajuster l'angle souhaité 15°-30°

Pour fixation 0°

