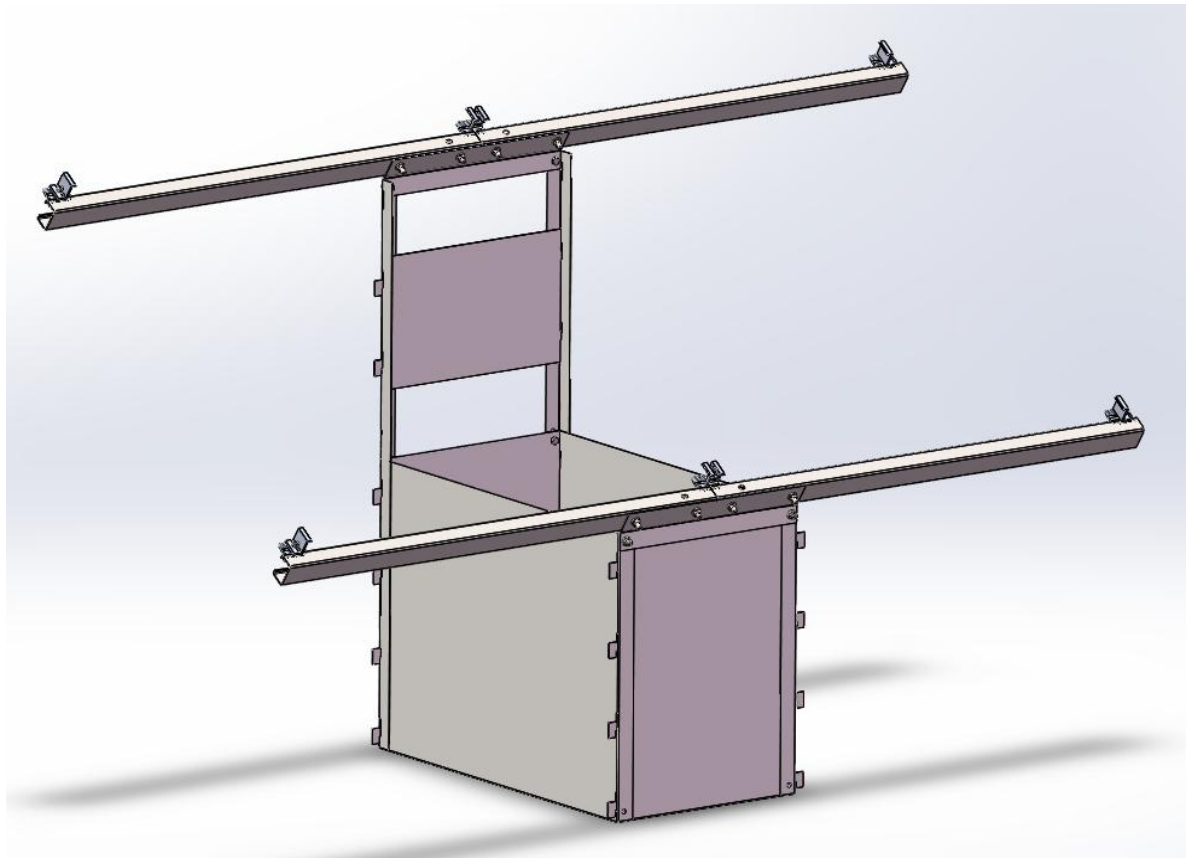



## Box Mounting Kit Installation

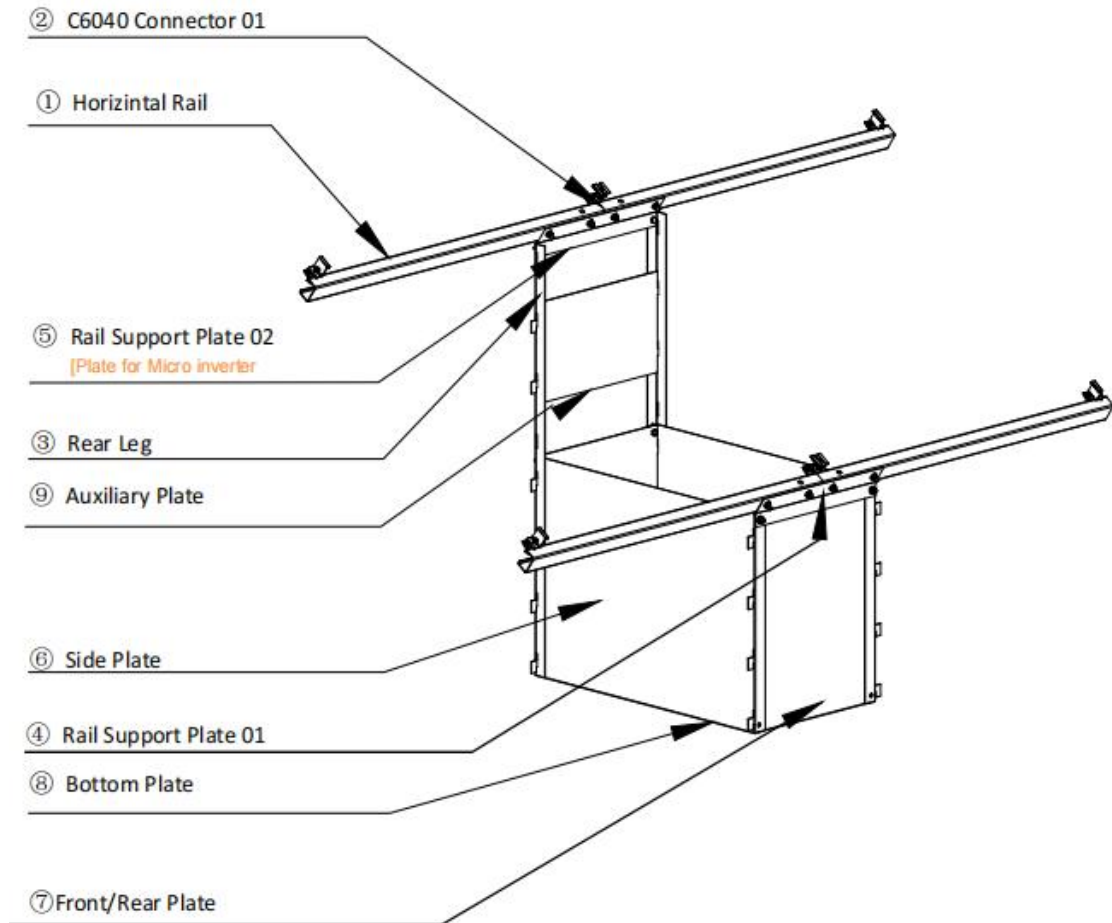


 **Pre-installation Preparation: Check all parts (①~⑫) to ensure they are complete, free of deformation and burrs.**

Item No	Part Description	Spec.	QTY/Kit	Usage
①	Horizontal Rail	1200mm	4	The main rail for mounting PV panels.
②	C6040 Connector 01	496mm	2	Used to connect and secure the horizontal rails.
③	Rear Leg	1280mm	2	Main vertical support for the entire structure.
④	Rail Support Plate 01	496mm	1	Top support bracket for the upper horizontal rail.
⑤	Rail Support Plate 02 (Plate for Micro Inverter)	496mm	1	Middle support bracket for the lower horizontal rail, also serves as the mounting point for the micro inverter.
⑥	Side Plate	900x650xt2	2	Side enclosure panels for the electrical box/mounting enclosure.
⑦	Front/Rear Plate	496x650xt2	2	Front and rear cover plates for the electrical box.
⑧	Bottom Plate	890x490xt2	1	Base support for the electrical box.
⑨	Auxiliary Plate	496x300xt2	1	Reinforcing/partition plate inside the enclosure.
⑩	SS Hex Bolt M10*25	M10x25	18	General-purpose fastener.
⑪	Mid Clamp Kit	30mm	2	For securing the middle position between two adjacent PV panels.
⑫	End Clamp Ki	30mm	4	For securing the edge position of PV panels.



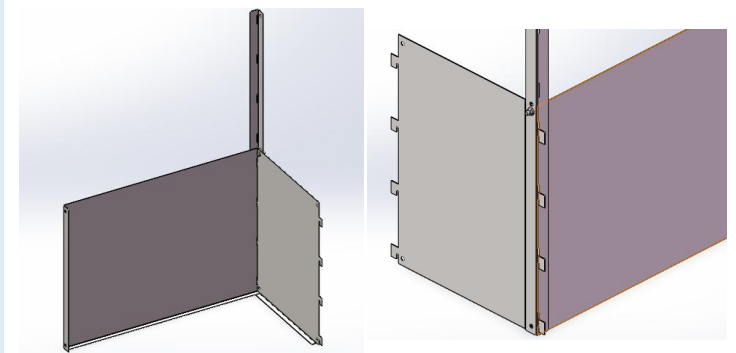
Refer to the overall assembly drawing below to get a clear overview of how each component is assembled.



## Step-by-Step Installation Instructions

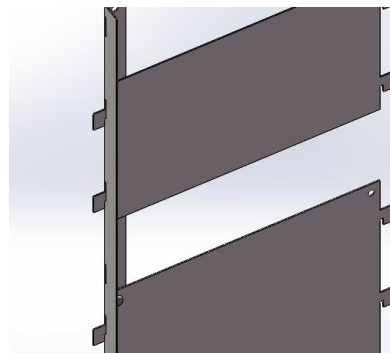
### Step 1

Place the 1st Side Plate and Left Rear Leg in vertical orientation. Fit the Rear Plate into the corner groove of the Rear Leg, and precisely align the mating cutouts. The assembled substructure can now stand independently.



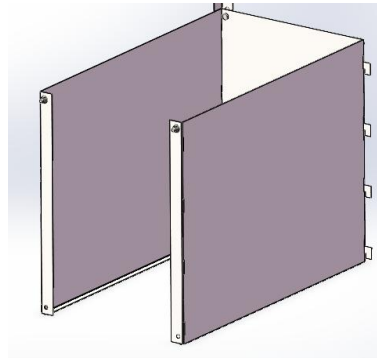
### Step 2

Mount Rail Support Plate 01 onto the Left Rear Leg by inserting the notches into the pre-drilled slots.



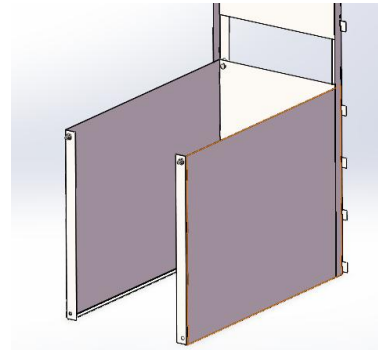
**Step 3**

Take the second Side Plate.  
Slide the notches of the Rear Plate into the matching cutouts on the Side Plate.



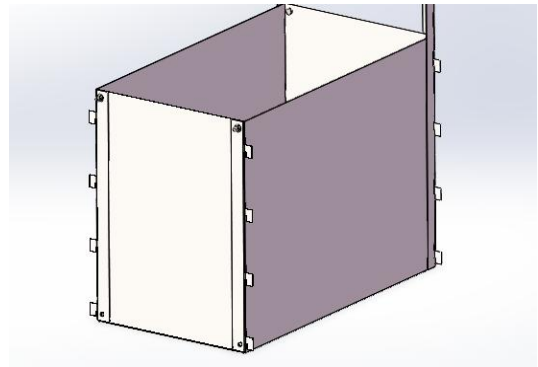
**Step 4**

Insert the right rear leg into the notches of the rear plate and into the notches of the Rail support plate 01.



**Step 5**

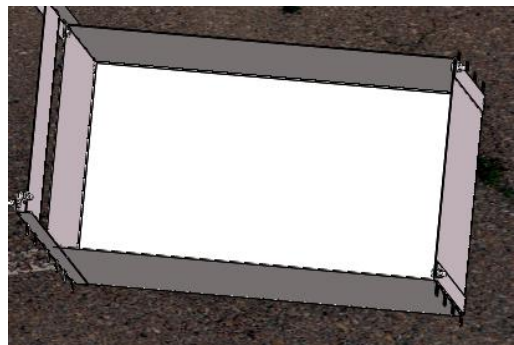
Install the front plate by engaging its notches into the slots of the two side plates



**Step 6**

Place the bottom plate into the frame you have assembled.

Important: Do not proceed to Step 7 until this step is finished.



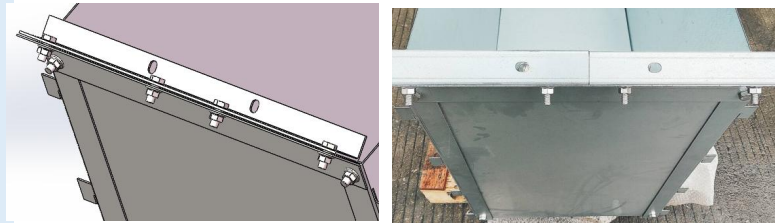
### Step 7

Use a rubber mallet to bend all visible notches on the side plates 90 degrees – both front and rear, including the inverter/Rail support plate.



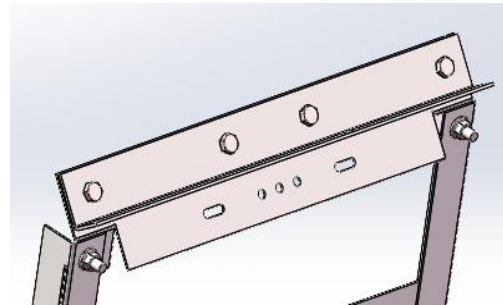
### Step 8

Fix the Rail support 01 onto the front plate using M10 bolts.  
Tighten firmly with a flat wrench.  
Observe the specified tightening torque.



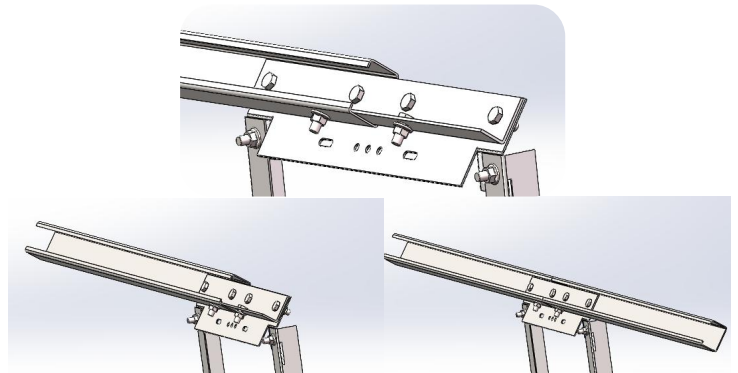
### Step 9

Fix the Rail rail support 02 onto the left rear leg and right rear leg using M10 bolts.  
Tighten firmly with a flat wrench.  
Observe the specified tightening torque.



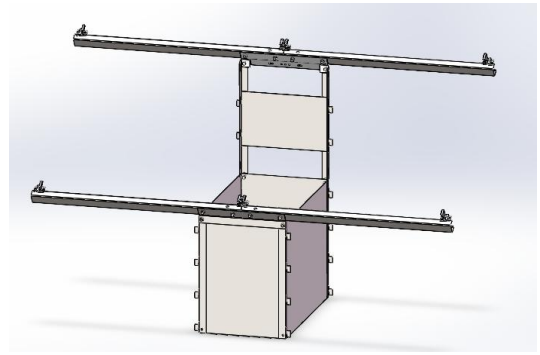
### Step 10

Assemble the rails together by inserting the connector into the first rail until it stops.  
Slide the second rail to join it to the first.  
Repeat once more for the second rail set.



### Step 11

Fix the rails to the Rear legs and Rail Support 02 using M10 bolts.  
Tighten firmly with a flat wrench.  
Observe the specified tightening torque.



### Step 12

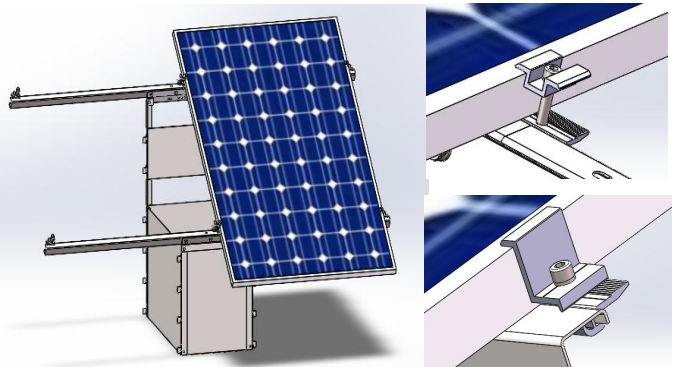
Fix the micro-inverter onto the Rail support 02 using the M10 bolts.

Micro-inverter fix to these two holes



### Step 13

Place the two solar panels vertically onto the rails in order.  
Secure the panels to the rails with mid clamps and end clamps.



### Post-Installation Checklist

All bolts tightened and no looseness.  
Horizontal rails & stable brackets, no sway.  
Panel clamps correctly fitted with uniform pressure.  
Electric parts fixed firmly; cables uncrushed and fully covered.

